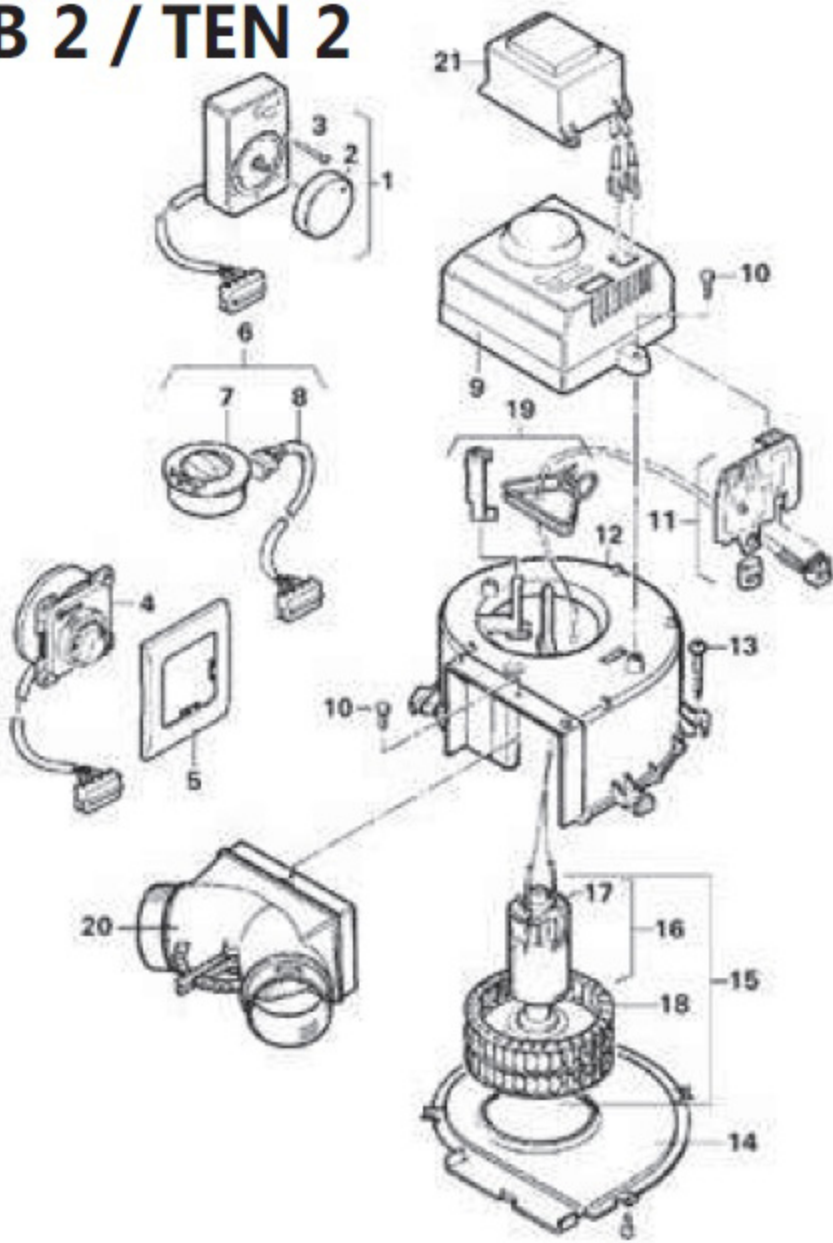


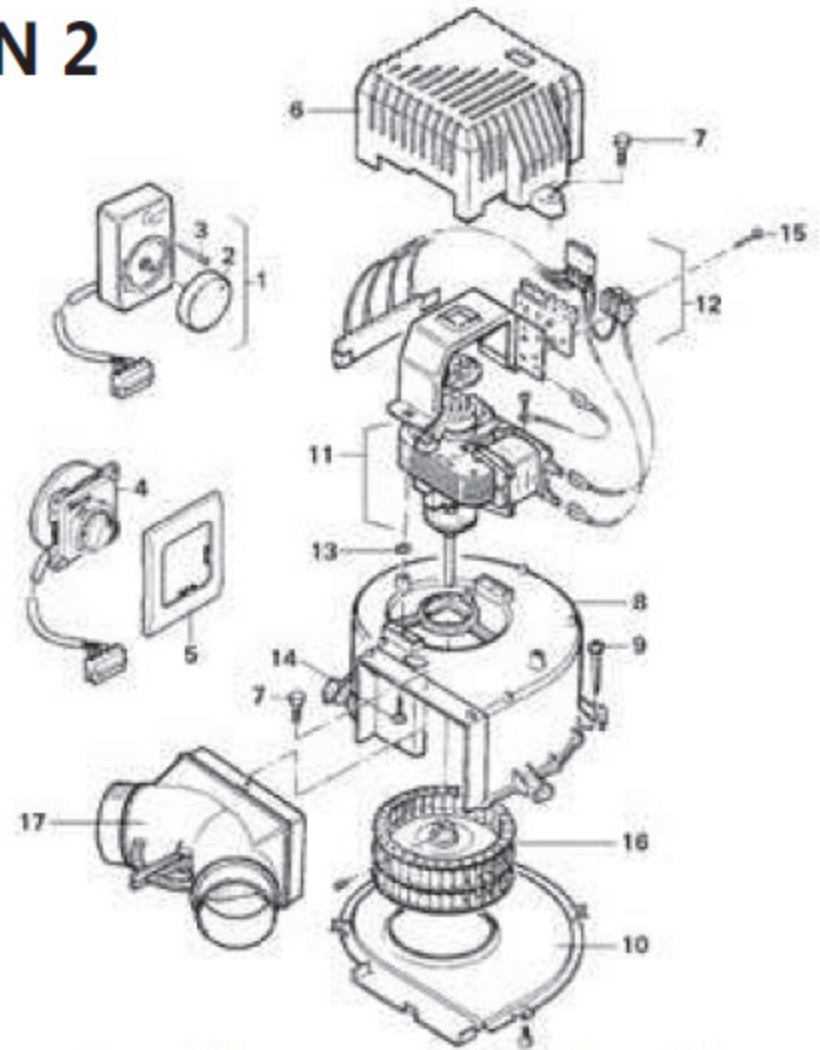
# TRUMA SPARES

## TEB 2 / TEN 2



No.	Truma No.	Description
01	40000-44100	Control panel TEB2 2.5m
02	40000-00100	Control knob complete
03	10010-78900	Screw B 2.9 x 25
04	40000-52900	Control panel TEB2 2.5m
05	34000-67700	Cover frame black
06	34000-60600	Cover frame agate grey
07	40000-47600	Control panel integrated 1.3m cable
	40000-47500	Control panel integrated 0.8m cable
08	40000-46000	Control panel TEB2 integrated no cable
09	40000-47900	Control panel cable 1.3 m
	40000-45000	Control panel cable 0.8 m
10	40000-43000	Cover TEB-2
11	10010-83700	Screw M 4 x 10
12	40000-60900	Power electronics TEB-2
13	40000-41000	Fan case
14	10010-72700	Screw B 3.5 x 22
15	40000-41200	Cover
16	40000-42400	D.C. motor 12 V
17	40000-42000	D.C. motor 12 V > 01/99
18	40000-28800	Carbon brushes wh/blk
19	40000-42500	Fan wheel only > 01/99
20	40000-93700	Motor mounting set
21	40000-43300	Y-piece TEB 2
	40000-39900	Transformer SPU 230-12 to operate the TEB2 fan with 230 V (TEN-2)

## TN 2



No.	Truma No.	Description
01	40000-17200	Control panel TN1 < 04/02 c/w cable
02	40000-00100	Control knob complete
03	10010-78900	Screw B 2.9 x 25
04	40000-67500	Control panel TN-2/3 black 2.5 m c/w cable
	40000-31500	Control panel TN-2/3 grey 2.5 m c/w cable
	40000-29100	Control panel TN-2/3 grey 1.5 m c/w cable
	40000-67600	Control panel TN-2/3 black 1.5 m c/w cable
05	34000-67700	Cover frame black
	34000-60600	Cover frame agate grey
06	40000-43100	Cover TN-2
07	10010-83700	Screw M 4 x 10
08	40000-41100	Fan case
09	10010-72700	Screw B 3.5 x 22
10	40000-41200	Cover
11	40000-92500	Split-pole motor 230 V
12	40000-92600	Motor strap complete
13	30070-11500	Spring nut
14	10010-72600	Screw B 3.5 x 13
15	10010-71000	Screw B 2.9 x 19
16	40000-42700	Fan wheel
17	40000-43300	Y-piece

No.	Truma No.	Description
01	40010-00100	Control panel TBM <04/02
02	10010-78900	Screw B 2.9 x 25
03	40010-02000	Control panel TBM agate grey
	40010-13700	Control panel TBM black
04	34000-67700	Cover frame black
	34000-60600	Cover frame agate grey
05	40010-10000	Air housing
06	40010-10100	Motor flange
07	40010-10500	Motor cover
08	40000-14300	D.C. motor 12 V
09	40000-28800	Carbon brushes white/black > 02/94
	39010-17400	Carbon brushes red/black < 02/94
10	40000-13100	Capacitor 100 nF
11	40010-11100	Fan wheel
12	10010-71300	Screw B 2.9 x 9.5 torx
13	10010-72700	Screw B 3.5 x 22
x	40010-11400	Vibration absorber
x	40000-17500	Resistor 27 Ohm, 5 Watt
x	40010-10300	Resistor holder

## Multivent fan

